

UNIVERSAL TESTING MACHINE

MODEL

เครื่องทดสอบแรงดึงแรงกด

ITK-5TX

www.itokin2000.com



Speed range

0.01mm/min ~

500mm/min

Stepless speed regulation



Tensile



Compress

ITK-5TX

Use of Japanese imports of **Panasonic servo motor** (0.75 Kw) international well-known and stable performance.



UTM + COMPUTER SET



UNIVERSAL TESTING MACHINE

MODEL

เครื่องทดสอบแรงดึงแรงกด

www.itokin2000.com

ITK-5TX

ITK-5TX

Use of Japanese imports of **Panasonic servo motor** (0.75 Kw) international well-known and stable performance.

Specification

Max Force : 50 Kn

Accuracy : 1Level

Test force range : 2%-100%

Test force indication relative error : $< \pm 1\%$

Test resolution Max force : 1/300000

Deformation range : 2%-100%

Deformation indication relative error : $< \pm 1\%$

Deformation resolution Maximum deformation : 1/300000

Displacement indication relative error : $< \pm 1\%$

Displacement resolution : 0.001 mm

Speed range : 0.01mm/min ~ 500mm/min Stepless speed regulation

Tensile stroke : 1000 mm

Compression space : 1000 mm

Test the width : 400 mm

Choose fixture Stretching, compression, bending, cutting, stripping, tearing, etc

Main frame size : 770 x 465 x 1730 mm

Servo motor power : 0.75 kW

Weight : 300 Kg



UNIVERSAL TESTING MACHINE

MODEL

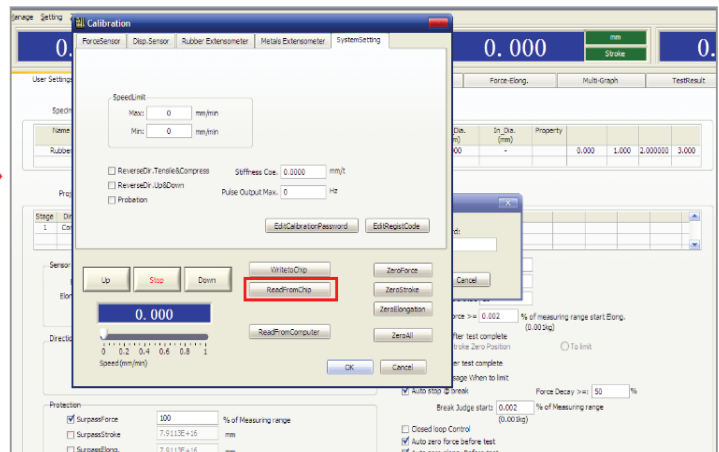
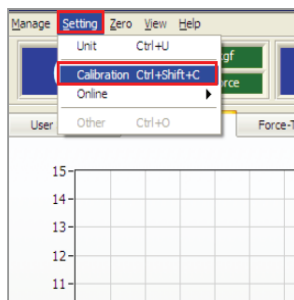
เครื่องทดสอบแรงดึงแรงกด

ITK-5TX

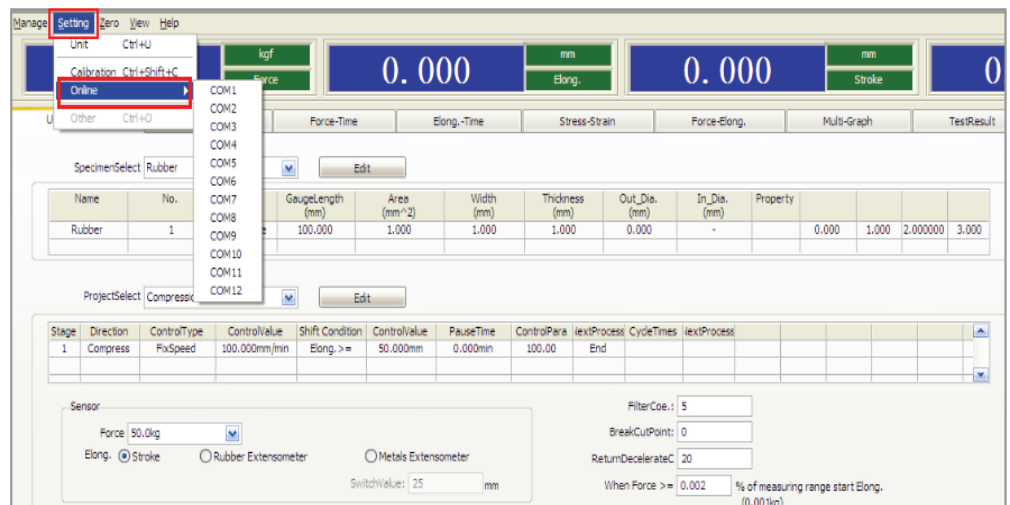
www.itokin2000.com

ITK-5TX

Use of Japanese imports of **Panasonic servo motor (0.75 Kw)** international well-known and stable performance.

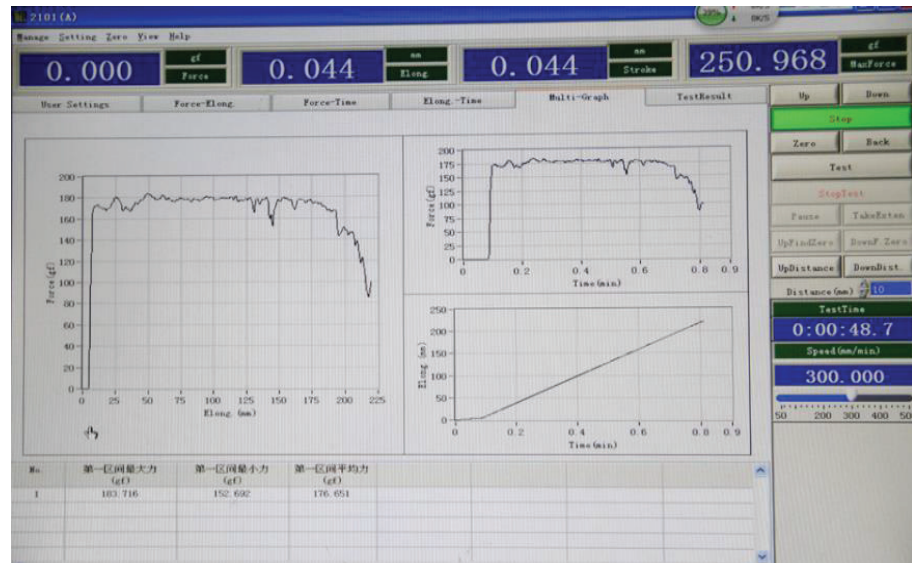


Software



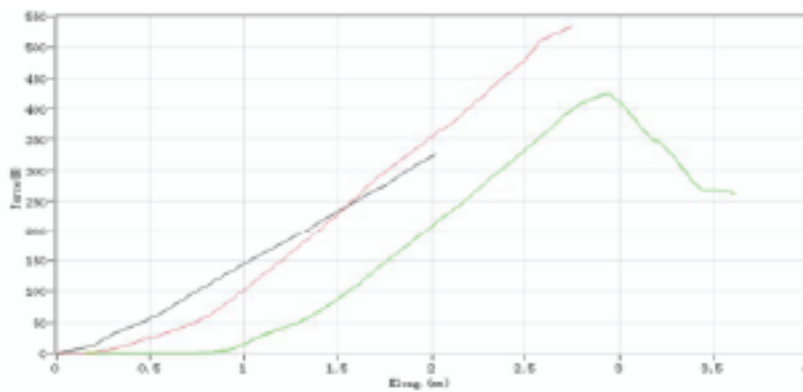
Software TM2101

www.itokin2000.com



Report

1. Customer: Yanz
2. Test Date: 2013-3-8. 10:18:10
3. Lot No.: 00000001
4. Material Name: Compression
5. Operator: Mingo
6. Material: Kubber
7. Test Speed: 50.000mm/min



No.	Force @ Peak (N)	Elong. @ Peak (mm)
1	328.97	2.019
2	532.78	2.744
3	423.12	2.937
Maximum	532.78	2.94
Minimum	328.97	2.02
Mean	427.29	2.57

